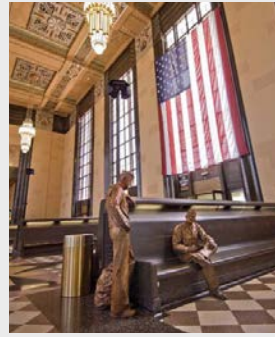




# NEBRASKA

## 2022 GROUP TOUR PROFILES

[VisitNebraska.com/group\\_travel](https://www.visitnebraska.com/group_travel)



## NEBRASKA FACTS:

Population: 1,934,408

Omaha: 478,192

Lincoln: 287,401

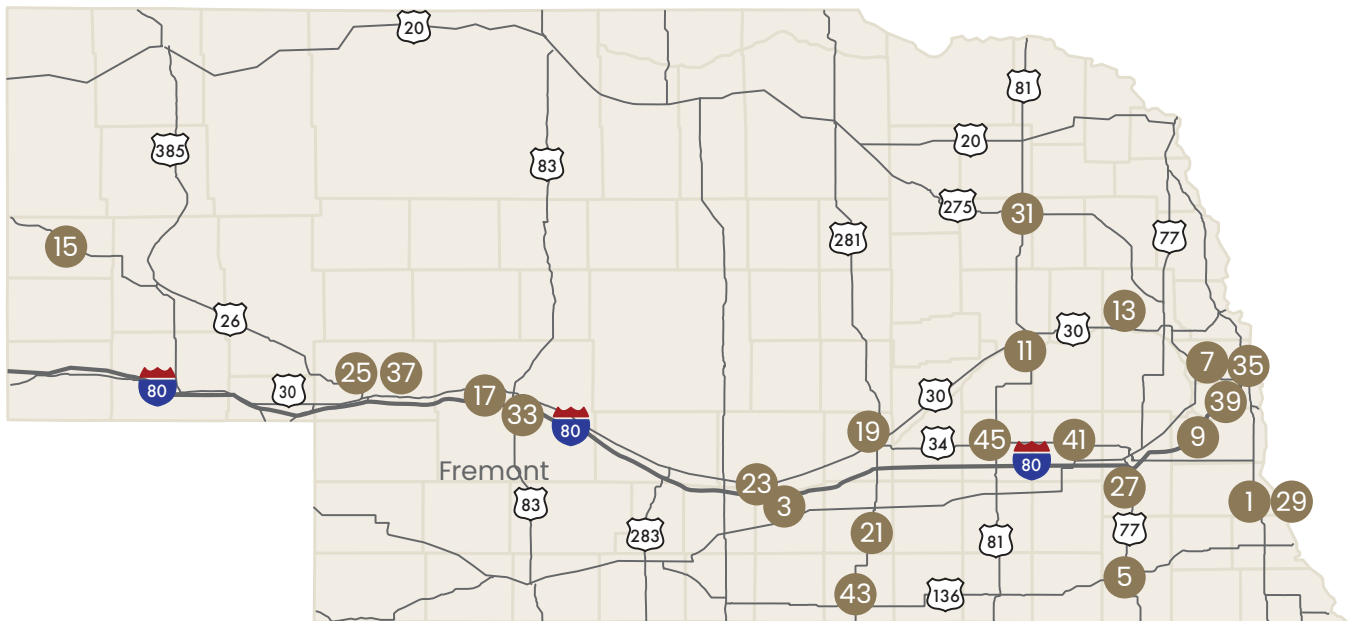
Grand Island: 51,267

## GETTING HERE:

US I-80 runs from the western border to the eastern border of the US.

HWY 83 runs from the north US border to the south US border.

Airports are noted below with ✈



\*locations are approximate

## Partners

Number on map indicates page number.

- |                        |   |
|------------------------|---|
| 1. Arbor Day Farm      | 25. Keith County Chamber                              |
| 3. The Archway         | 27. Lincoln ✈   |
| 5. Beatrice            | 29. Missouri River Basin Lewis & Clark Visitor Center |
| 7. Boys Town           | 31. Norfolk   |
| 9. Cass County         | 33. North Platte ✈                                    |
| 11. Columbus           | 35. Old Market Association                            |
| 13. Fremont            | 37. Ole's Big Game                                    |
| 15. Gering ✈           | 39. Omaha ✈   |
| 17. Golden Spike Tower | 41. Seward County                                     |
| 19. Grand Island ✈     | 43. Willa Cather Center                               |
| 21. Hastings           | 45. York  |
| 23. Kearney ✈          |   |





## It's more than a getaway. It's *discovery* at every turn.

Come explore the 260-acre Arbor Day Farm in Nebraska City — perfect for group tours and activities. Play among the trees at the one-of-a-kind Treetop Village®, hike wooded trails, pick apples in the fall, shop at the Apple House Market, and visit a historic mansion.

Complete the adventure with an overnight stay and award-winning dining at the nature-inspired Lied Lodge.

Learn more online or call today for help planning a group tour.



2700 Sylvan Road, Nebraska City, NE | 800-546-5433 | [arbordayfarm.org](http://arbordayfarm.org)





# Experience *all* Arbor Day Farm has to offer.

## Tree Adventure

- Experience the fun-for-all-ages Treetop Village®
- Hike miles of wooded trails
- Schedule a guided tour, Discovery Ride, or Gnome Hunt

## Apple House Market

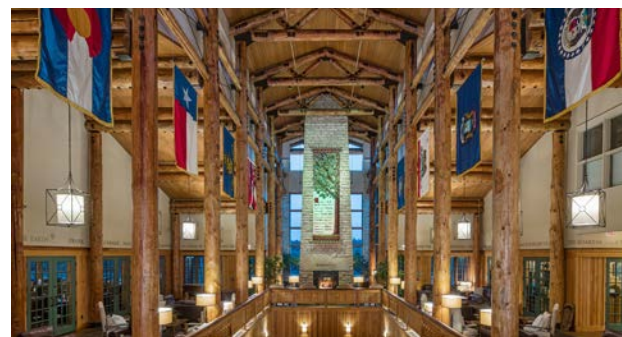
- Enjoy a wine or hard cider tasting
- Shop for locally made items and seasonal produce
- Taste Arbor Day Farm apple cider and see how it's made
- Dine on mouth-watering barbecue at Porter's

## Arbor Lodge State Historical Park

- Explore the magnificent 52-room mansion
- Tour the 72-acre park, featuring an arboretum, walking trails, and more
- Schedule a private tour, Mystery at the Mansion event, or Arbor Lodge Tea

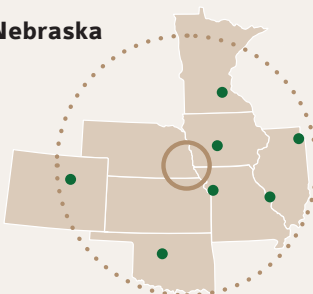
## Lied Lodge

- Spend the night in a peaceful, resort-like setting
- Relax on the Sunset Terrace
- Enjoy artfully prepared meals at Timbers
- Park for free!



## Come visit us in beautiful Nebraska City, Nebraska

Chicago	7.5 hrs, 504 miles
Denver	8 hrs, 550 miles
Des Moines	2.5 hrs, 169 miles
Kansas City	2 hrs, 145 miles
Minneapolis	6 hrs, 416 miles
Oklahoma City	6 hrs, 412 miles
St. Louis	6 hrs, 392 miles



Begin planning your group tour today. Call 402-873-8705 or learn more online at [arbordayfarm.org](http://arbordayfarm.org).



# The ARCHWAY

Kearney, Nebraska

Make your next tour an  
**EPIC ADVENTURE**



## THE ARCHWAY BRINGS THE STORY OF AMERICA TO LIFE.

- At I-80 at Exit 275 in Kearney, NE
- Pull through parking for buses
- Self-guided audio tour lets you see the pace
- Barrier free accessibility
- Seating for catered meals for up to 110
- Choose your meal, hot and ready when you need it
- Free admission for tour guides and bus drivers
- Find locally made souvenirs in our gift shop



**"WE LOVED IT! WHAT AN  
AWESOME STOP!"**

*- Helen, Emma, and  
Jacob, Albany, Oregon*

SEE MORE AT [THEARCHWAY.ORG](http://THEARCHWAY.ORG)



CONTACT AMBER CLEMENT AT [ACLEMENT@ARCHWAY.ORG](mailto:ACLEMENT@ARCHWAY.ORG) OR CALL 308-237-1000.



EXPERIENCE 170 YEARS OF HISTORY IN ABOUT AN HOUR.



DISCOVER EVERYTHING THAT THE ARCHWAY HAS TO OFFER.



"NO WORRIES" CATERING - THE PERFECT TOUR, GROUP MEAL STOP.



KEEP YOUR GROUP TOGETHER. YOU CHOOSE THE MEAL OPTIONS. READY WHEN YOU ARE.

From a hot buffet to a box lunch, we'll work with you to find the best catering options at the best price. And, we'll be sure your meal is ready when you need it. No wading through long lines for fast food, worrying about adequate seating, or chasing down group members who are late to return. Our event room has seating for up to 110 and we work with the top restaurants and caterers in town to make your meal really special.

SEE MORE AT THE ARCHWAY.ORG

CONTACT AMBER CLEMENT AT ACLEMENT@ARCHWAY.ORG OR CALL 308-237-1000.





*Pleasant View Schoolhouse*



*Stone Hollow Brewing Company*



*Cedar Creek Pottery*

## HISTORIC | FUN | UNIQUE

Conveniently located 35 miles south of Lincoln, NE on Highway 77.

Award-winning fine dining and 15+ fast food options.

Spacious hotels and lodging options for larger groups.

### HISTORIC

- Gage County Museum inside the former 1906 Burlington Train Station
- Homestead National Historical Park
- Chief Standing Bear Trail
- 1900-era one-room schoolhouse in Wymore
- Great Plains Welsh Heritage Centre
- 1904 Carnegie Building
- Gage County Courthouse, a National Register of Historic Places site

### FUN

- Award-winning Community Players Theater
- Stone Hollow Brewing Company
- Beatrice Speedway
- Tall Tree Tastings, a Nebraska tasting room.
- Rolla Rena Skate Center
- The Mechanical Room, a prohibition-style speakeasy.

### UNIQUE

- Yesterday's Lady, Nebraska's largest collection of vintage clothing.
- Handmade pottery at Cedar Creek Pottery
- Beatrice Bakery Company: Home to Grandma's Fruitcake
- Traubel's Popcorn Stand





# Homestead National Historical Park

8523 W. State Hwy 4, Beatrice, Nebraska 68310

Reservations: 402-223-3514

Email: [home\\_information@nps.gov](mailto:home_information@nps.gov)

Explore the complex legacy of a law signed  
by Abraham Lincoln, the Homestead Act of 1862.

**FREE**  
ADMISSION

**CATER YOUR EXPERIENCE  
FOR YOUR SPECIAL GROUP**

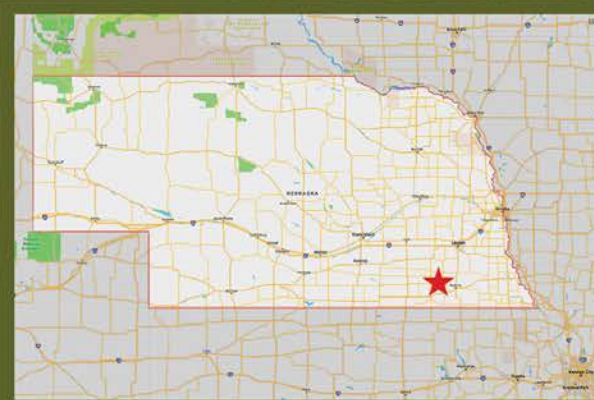
- Explore the Heritage Center museum
- Watch the 23 minute award winning park film
- Enjoy a Park Ranger led program
- Unearth family roots on research computers
- Visit the historic 1872 one room Freeman School
- Imagine living in the 1867 Palmer-Epard Cabin
- View special exhibits at the Education Center
- Stroll through tallgrass prairie
- Make a homestead craft



*The Heritage Center's museum offers visitors state-of-the-art exhibits that present homesteading in an interactive setting.*

## Ideal for Tours!

- FREE parking
- Fully accessible
- Restrooms for visitors
- Picnic areas
- Reserve the multipurpose room for gatherings



### WE ARE EASY TO GET TO

- 45 minutes from Lincoln, NE
- 2 hours from Omaha, NE
- 3 hours from Kansas City, MO

We are open daily year round.  
For more information, visit us online:  
**[www.nps.gov/home](http://www.nps.gov/home)**

**Travel the  
National Parks**





# Discover

## the Village of Boys Town!



### A True American Treasure

There's a square mile in Nebraska where miracles of the heart happen every day. It's a community of caring where kids are saved, families are healed and despair and darkness are conquered by the promise of a brighter future.

At the Village of Boys Town, we welcome more than 100,000 visitors from across the United States every year. Be our guest and experience Father Flanagan's vision for changing the way America cares for children, families and communities at world-famous Boys Town today!

Whether Omaha is your travel destination or a just a stopover, be sure to make the Village of Boys Town part of your itinerary!

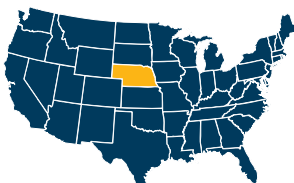
### Our Step-On Certified Guided Tours

Designed for larger groups, this tour begins at the Boys Town Visitors Center, where a step-on guide will greet and join you. From there, you'll enjoy a driving tour through the Village and see where our children live, play, work, go to school and pray. Depending on the time of day, your group can sit down to a hearty breakfast or relax over a delightful lunch. And check out our Gift Shop for a unique gift or souvenir.

The suggested tour length is 2 hours. But regardless of how much time your group has to spend at Boys Town, our staff can create a tour package that will help you make the most of every minute. Group pricing is available.



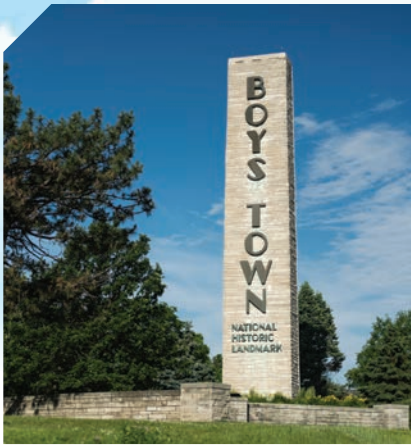
### We're closer than you think!



**Chicago** 479 miles  
**Minneapolis** 392 miles  
**Denver** 532 miles  
**Kansas City** 196 miles

For help with planning a tour, call **800-625-1400**. Or book your tour online at **[boystown.org/tours](https://boystown.org/tours)**.

#boystownvillage |   



## Popular Attractions

### » Hall of History Museum

Post a photo of yourself with our Oscar or get on board the “Flex” bus in our award-winning interactive museum detailing Boys Town’s past, present and future.

### » Historic Father Flanagan House

See the 1920s-era home of our founder, Father Edward Flanagan, including recreations of his office, the first chapel, a dormitory, a school room and more.

### » Churches (Chambers Chapel and Dowd Chapel)

Visit Father Flanagan’s Tomb, located in the beautiful Dowd Chapel, and view the marvelous Gothic architecture of Chambers Chapel. Father Flanagan has been named a Servant of God as part of the Cause for Canonization to make him a saint of the Catholic Church.

### » World’s Largest Ball of Stamps

The World’s Largest Ball of Stamps is a favorite with children and adults alike. Weighing in at 600 pounds, you’ll never believe what’s at its core!

### » Visitors Center Gift Shop and Café

Pick up tour information, purchase souvenir gifts, eat a hot meal and visit the World’s Largest Ball of Stamps, all located in the Village of Boys Town Visitors Center.



2108-198-05



BOYS TOWN®



# CASS COUNTY NEBRASKA

PLAN YOUR NEXT

## ADVENTURE RIGHT HERE!

VisitCassCounty.com

Minutes away from Omaha and Lincoln



### Cass County Overview

Halfway between Omaha and Lincoln, amid the grassy banks of two mighty and historic rivers, Cass County is a popular destination for those seeking serenity or adventure away from the city. We offer a wide range of activities for outdoor lovers, history buffs, wine/beer enthusiasts and specialty shoppers. An adventure awaits your group right here in Cass County. We look forward to talking with you!

### Tour Ideas

- Cultural
- Historical
- Agricultural
- AdVENTURE
- Mystery

### Packages

Consider any of the above ideas to get things started. To make sure the experience is what you are looking for we can customize your tour with surrounding area attractions also. Omaha, Lincoln, Sarpy County and Nebraska City

### Services for Tour Operators

- Itinerary Planning
- Lodging/Dining Group Rates
- Calendar of Events
- Personalized Site Visits
- Step-on Guide Available
- Complimentary Gift



### CONTACT US

Carl Reichart  
Tourism Director  
316 Chicago Ave. #2  
Plattsmouth, NE 68048

director@visitcasscounty.com  
TW: @visitcasscounty  
FB: VisitCassCounty

Visit  
**CASS COUNTY**  
NEBRASKA  
★ ★ ★

VisitCassCounty.com

800-965-8479  
402-296-5999



# CASS COUNTY NEBRASKA

Unique experiences close to Omaha and Lincoln



SAC & Aerospace Museum



Slattery Vintage Estates



Mahoney Lodge



Bakers Candies



The Hop Yard



Union Orchard

## Types of Tour Opportunities

- Guided Walking
- Veterans
- River Canoe and Tubing
- Agri-tourism Experiences
- Famous Nebraska Author
- AdVENTURE Experiences
- Dining/Catering
- Mystery Theater
- Coffee House
- SAC & Aerospace Museum
- Unique Shopping
- Behind the Scenes/VIP Tours
- Lee G. Simmons Wildlife Safari
- Bakers Candies
- Antique Outlet with Dining
- Beer and Wine
- Unique Hands on Entertainment

Wildlife Safari Park



Bess Streeter Aldrich House



Carol Joy Helling



Mahoney Wall Climbing



Loft Theatre

## The Drive

Cass County Nebraska is just minutes away from Omaha and Lincoln with access from Interstate 80, Interstate 29 and Highway 75



## DESTINATION TRAVEL TO CASS COUNTY

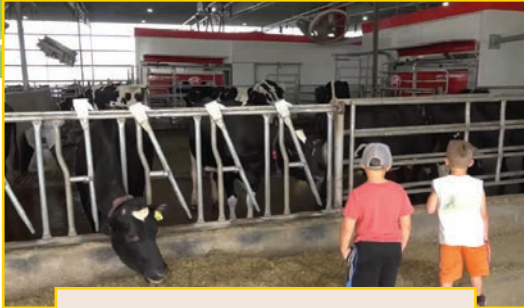
Des Moines, IA .....	2 h 35 min (168.1 mi)	via I-80 W
Kansas City, MO .....	2 h 44 min (177.5 mi)	via I-29 N
Denver .....	7 h 22 min (525.0 mi)	via I-76 E and I-80 E
Topeka .....	2 h 26 min (149.9 mi)	via US-75 N
Tulsa .....	6 h 9 min (368.1 mi)	via US-75 N and US-75 N
Minneapolis .....	6 h 7 min (412.5 mi)	via I-35 S and I-80 W

VisitCassCounty.com  
800-965-8479



# COLUMBUS, NE

You can get here from there... We invite you to explore our agricultural community and experience all the Columbus area has to offer.



**LARSON DAIRY**

Robotic dairy, 1 of 3 in Nebraska! family friendly, customizable tours, wine & cheese tasting and so much more are available for your visit. You will be mesmerized!



**DANIELS PRODUCE**

Learn what farm to fork really takes when you tour this family operation. Field tours, demos (canning, potting, picking, etc.), harvest experience and so much more await you.



**COLUMBUS POTATO FARM**

Our Columbus location prides itself on exceptional freshness and unbeatable storage quality on 1,400 acres of chipping potatoes each year. Not just small potatoes. We are excited to welcome you to potato paradise.



**MARKET 23**

Shop a variety of all Nebraska farm fresh goods. You won't be disappointed. Classes, tasting and demos available. From craft wines & beer to produce and coffee there is something for everyone!



**IPC**

DNA Genetics InSight Performance Center. From farm to fork, learn about the swine welfare, care and the overall industry with DNA!



**BEHLEN MFG**

Tour a state of the art manufacturing facility. Columbus is home to Behlen's world head quarters.



# did you know?

## What the Columbus Area Visitors Bureau can do to help you...

Event planning can be difficult. Let us help you plan your event and visit to Columbus, NE!

we have  
**10** Hotels in  
Columbus. That's a  
total of **675** Hotel Rooms!

there is a *variety* of  
**Meeting Spaces**  
available for small groups  
of 15 people to large  
groups of up to 1000.

we will  
**Help you plan!**

### We offer:

- Agenda Design/Planning
- Name Badges
- Entertainment
- Industry Tours
- Day/Attraction Passes
- Local Info & Guides
- Negotiating Group Rates
- Competitive Event Bid Pricing
- Welcome Banners
- Speakers
- Program Assistance
- Itineraries
- Walking Tours
- History Tours
- Event Promotion
- Restaurant Discounts & Reservations
- Catering
- Retail Discounts



## Hotels & Motels

*Columbus, NE*

Hotel/Motel	# of Rooms	Meeting Facilities
Columbus Inn	40	
Days Inn & Suites	70	✓
Econo Inn	39	✓
Hampton Inn	80	✓
Holiday Inn Express Hotel & Suites	90	
Ramada Columbus & Rivers Edge Convention Center	140	✓
Sleep Inn & Suites by Choice Hotels	95	
Sundown Motel	22	
Super 8 Motel	63	
Victorian Inn	36	
<b>675</b>		

## For additional *information*

please visit our website at  
[www.visitcolumbusne.com](http://www.visitcolumbusne.com)  
Katy McNeil: 402-276-3606  
[kmcneil@plattecounty.ne.gov](mailto:kmcneil@plattecounty.ne.gov)





# VISIT FREMONT



## Convenient Location

45 Minutes from downtown Omaha and one hour northeast of Lincoln, “**Eastern Nebraska’s Antique Capital**” is conveniently connected to surrounding metropolitan centers and an attractive option for meetings and groups.



## Complimentary Services

- Itinerary Development
- Facilitation of Bid Proposals
- Coordination of Site Visits
- Dignitary Welcome Letters and Visits
- Additional Staff Development



## Publications and Marketing Offerings:

- Photo Library
- Event Promotion
- Web/Technology Development
- Social Media

# Different Views

In Fremont the views are just a bit different. Here you have the opportunity to do anything from sleeping under the stars, to air-boating with amazing wildlife views, or even swimming in one of our beautiful lakes. Now you too can enjoy the view - **Visit Fremont!**



[visitfremontne.org](http://visitfremontne.org)

For Information Contact:  
Shannon Mullen  
Fremont & Dodge County Convention and  
Visitors Bureau Director  
[director@visitfremontne.org](mailto:director@visitfremontne.org) • 402-753-6414



## Fremont, Nebraska is a launch point for hiking, camping, waterskiing, fishing, even air-boating, and is anchored by a historic downtown.

Fremont's roots are anchored in its Historic Downtown and it is as vibrant as it was when the city was first established in 1856. In 2018, Fremont's Main Street was included on a USA Today list of "charming Main Streets" across the country. The list featured a Main Street from each state in the country, highlighting Fremont's MainStreet as the representative for Nebraska. As pointed out by the USA Today entry, much of Downtown Fremont's charm can be found in the melding of preserved history and constant efforts to grow and evolve the area with cutting-edge businesses and events. While some people make the trip to downtown looking for a piece of the past at one of the many antique shops that have led to the area being dubbed "Northeast Nebraska's Antique Capital", some will also browse through the numerous unique boutiques and shops.



**RIVER LIFE  
AIRBOAT TOURS**  
Cedar Bluffs, NE  
402.699.4489

Feel the excitement and enjoy a getaway on one of Fremont's wonderful treasures. River Life Airboat Tours will renew your spirit as you take photos of bald eagles, get up close and personal to river wildlife, and see the scenic beauty with awe-inspiring sunrises and sunsets. Try a short ride for lunch on the river or relax with a nice long dinner – sky's the limit.



**FREMONT STATE  
LAKES  
RECREATION AREA**  
2351 County Road 18  
Fremont, NE  
402.727.2922

The third largest tourist attraction in Nebraska. Campgrounds among many lakes that are perfect for boating, swimming, fishing and more.  
<http://outdoornebraska.gov/fremontlakes/>

**DILLON FAMILY AQUATIC CENTER**  
1558 East Military Ave. - Fremont, NE  
402.721.6952

The 30,000-square-foot facility houses one body of water with six 50-meter lanes running east and west, and 12, 25-yard lanes that will accommodate competitive and recreational swimmers at the same time. In addition, there's seating for upward of 400 people, two locker rooms, a hot tub, steam room, family changing rooms, a splash pad and diving well.

[www.fremontfamilyymca.org](http://www.fremontfamilyymca.org)

**FREMONT FAMILY YMCA**  
10 N Lincoln Ave. - Fremont, NE  
402.721.6952

Fremont is home to the second largest YMCA in the country. The 200,000-sq. ft. the facility consists of: four full-sized gymnasiums; aquatics center with two pools and hot tub; five indoor tennis courts; Olympic-sized ice arena; 10,000-square foot wellness center; air-conditioned fitness studio; three racquetball courts; fully-equipped gymnastics center; 1/10-mile walk/jog track; and a climbing wall.

[www.fremontfamilyymca.com](http://www.fremontfamilyymca.com)

**FREMONT AREA ART ASSOCIATION**  
92 West 6th Street - Fremont, NE  
402.721.7779

A nonprofit organization to promote the appreciation and development of visual art in and around the Fremont area. Monthly art exhibits.

[www.92west.org](http://www.92west.org)



**LOUIS E. MAY  
MUSEUM**  
1643 North Nye Ave.  
Fremont, NE  
402.721.4515

Originally built in the Italianate Revival style built in 1874. The current style is Georgian or Classical Revival and is listed on the National Register of Historic Places. The grounds are a Nebraska Arboretum Site.

[www.maymuseum.com](http://www.maymuseum.com)

**LUENINGHOENER PLANETARIUM**  
900 N. Clarkson - Fremont, NE  
402.941.6328

[www.midlandu.edu/planetarium](http://www.midlandu.edu/planetarium)



**SIDNER ICE ARENA**  
1558 East Military  
Fremont, NE  
402.753.0200

The Sidner Ice Arena was constructed in 2003 and 2004. The arena is part of the Fremont Family YMCA.

[www.fremonticearena.com](http://www.fremonticearena.com)



**SPLASH STATION**  
3809 E Fremont Dr.  
Fremont, NE  
402.727.2619

Fremont's water park will be opened for another summer of fun! Located at Johnson Park near Fremont Middle School, Splash Station features a body slide, a speed slide, a zero-depth entry pool with a train-themed play features, a lap/wave pool, splash area and plenty of deck and green space. Public swim hours are 11am-7pm daily (May-August).

[www.fremontne.gov](http://www.fremontne.gov)



**FREMONT  
VETERANS PARK**  
1558 E Military Ave.  
Fremont, NE  
402.541.4482

Has flags representing each of the six branches of the military, American flag, memory tiles, monument, statue, and an Eternal Flame.

[www.fremontveteranspark.org](http://www.fremontveteranspark.org)

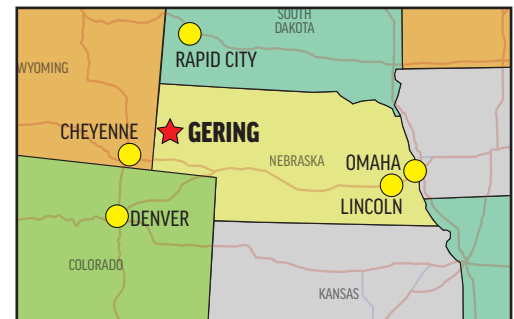


# GERING, SCOTTSBLUFF & WESTERN NEBRASKA



## You never know what you'll find when you go the extra mile.

Welcome to GERING, Scottsbluff, and Western Nebraska, where the history of Oregon, California and Mormon Trails engage groups to explore the natural landscapes of Scotts Bluff National Monument, Chimney Rock, Legacy of the Plains Museum, and Wildcat Hills State Recreation Area. Treat your groups to customized itineraries complimented with sunrise breakfast and hot air ballooning, Wagon Train cook-out dinners, movies and music at Five Rocks, and local craft breweries and wineries. We can't wait to meet you and show you how Gering goes the extra mile for operators and your clients.



## Gering Visitors Bureau complimentary services:

- Group Tour Manual
- Sample itineraries tailored to your groups
- Coordination with local attractions
- Escort notes, videos and digital images
- Permits and fees provided by the Bureau
- Experienced step-on guides
- Bureau hosted welcome receptions, welcome bags, and shopping coupons
- Catering assistance for meals at unique venues
- 900 Gering-area group friendly hotel rooms, 70+ culturally diverse restaurants



**Karla Niedan-Streeks**  
EXECUTIVE DIRECTOR

Gering Visitors Bureau  
1050 M Street  
Gering, NE 69341

[karla@visitgering.com](mailto:karla@visitgering.com)

308.436.6886

800.245.0717

[VisitGering.com](http://VisitGering.com)





Gering and Western Nebraska are empowering the "pioneer spirit" in group visitors. Let's start planning half-day, full-day or multi-day adventures to create excitement for your clients to be part of something that settled the west!



### Scotts Bluff National Monument

On the drive to the monument, you're on the historic Oregon Trail that pioneers once traveled by covered wagon more than 100 years ago. The sandstone landmark stands over 4,600 ft. above sea level. See original wagon ruts, hear pioneer tales from costumed interpreters, taste "hard tac" (a staple on the trail), drive up the 1.6 mile path to the Bluff's Summit for guided hikes, photos and breathtaking views of the Western Nebraska landscape.

**Tour time: 2-3 hours.**



### Legacy of the Plains Museum

America's roots run deep at Legacy of the Plains Museum. On the Oregon Trail, the hands-on experiences Museum and campus feature impressive collections of pioneer and early community artifacts, blacksmith shop, sod house, antique tractors, all on an 80-acre working farm. Itineraries for groups include hay rack rides, farm-to-table lunches served indoors/outdoors on the working farm or an evening Oregon Trail Wagon Train steak dinner with campfire entertainment.

**Tour time: 1-2 hours.**



### Wildcat Hills State Recreation Area

The Wildcat Hills were formed from ancient river deposits of rock, sand, and silt carried from the Rocky Mountains some 60 million years ago. Day trips include nature-wildflower walks, winding thorough the shallow canyons and bluffs, bird-wildlife watching and picnics at one of three stone picnic shelters. Amateur and expert marksmen can show their skills at the newly completed shooting range for handguns, rifle and archery.

**Tour time: 1-2 hours.**



### Old West Balloon Fest & Annual Events

Tour groups get up early for breakfast at the launch site to see the dawn spectacle of 20+ hot air balloons taking flight in the Western Nebraska skies or enjoy the dusk balloon glow showcasing colors of balloons illuminating the night skies. The arts and cultures of the high plains engage clients during year-round annual events; Oregon Trail Days, Celtic and Greek Festivals, car shows, harvest days quilt tours, holiday markets and crafts shows.

**Tour time: Half-day to full-day, depending on the event.**



### Chimney Rock

Visible to wagon trains from several days away, the Chimney Rock 120-foot spire was unlike anything Oregon Trail pioneers had ever seen. A stop in the Visitors Center at the National Historic Site or viewing the rock from nearby Chimney Rock Cemetery with an interpretive guide offers a view most travelers never get to see. Wagon ruts and remains of original sod houses can be seen at the most famous landmark of the Oregon Trail.

**Tour time: 1 hour.**



### Robidoux Trading Post

Welcoming visitors since 1849, the reconstructed Robidoux 1851 Trading Post was used by emigrants traveling to Oregon, fur trappers, traders and gold rushers. Walk on the Post's dirt floor, see period-specific furs, traps, beads and cookware traded at the post. Signs mark the trail along on a short drive from the Post where ruts have been eroded, wagon swales are visible and to the exact location of Dunn pioneer graves, one of only seven marked burial sites along the Oregon Trail.

**Tour time: 1 hour.**

## In Gering, we go the extra mile for group tours.

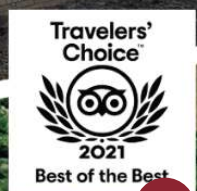




## GOLDEN SPIKE TOWER

A panoramic view of the world's largest rail yard.

# GOLDEN SPIKE TOWER NORTH PLATTE, NEBRASKA





# GOLDEN SPIKE TOWER

NORTH PLATTE, NEBRASKA

## GREAT LOCATION...

Just 10 minutes from I-80, Highway 30 and Highway 83

## EASY LOADING/UNLOADING...

Large parking lot with front door loading/unloading for motor coach buses.

## FITS YOUR SCHEDULE...

Open Daily with flexible hours to accommodate your time schedule.

## GREAT RESTROOM STOP...

Large, clean and well-stocked five stall men's and women's restrooms.

## YOU CHOOSE...

Your choice of a guided (1.5 hour) or self-guided (1 hour) tour with friendly, knowledgeable docents. Tours as low as \$6 per person.

## JUST A FEW PERKS...

Complimentary group souvenir photo provided for each guest as a reminder of their visit. Fresh, hot coffee. Tour guides & Motor Coach Driver.

*\*New Offer!*

## INCLUSIVE "TOUR & A MEAL" OPTIONS

All inclusive package for a one hour tour (with guide) and a meal. Available for breakfast, lunch, dinner or a simple snack break. Ranging from \$10-\$40.

Or, really WOW your group; an after hours, private, catered dinner on the 8th floor observation deck. Buffet menu options available including the special "Taste of Nebraska" buffet; highlighting foods and beverages of Nebraska. A favorite for many tour groups! Starting at \$35 per person, 2.5 hours.

**KIRSTEN PARKER, CTIS**

KPARKER@GOLDENSPIKETOWER.COM  
OR (308) 532-9920 X202





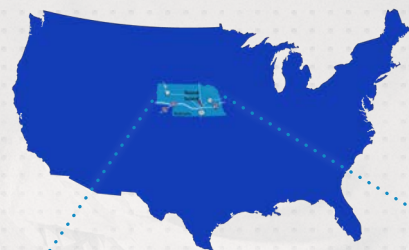
# Grand Island

## Nebraska

Grand Island's attractions and events will keep you engaged throughout your entire stay in our city.

In Grand Island you will find Fonner Park, where the Nebraska springtime tradition of Thoroughbred horse racing thunders around the track, the Nebraska State Fair entertains, and national livestock shows show off the agricultural roots of our community. Grand Island is also home to the Husker Harvest Days farm show, Stuhr Museum and the University of Nebraska's Raising Nebraska – a modern agricultural showcase.

Grand Island is connected by the popular downtown Railside District with its abundant dining and shopping. The free and festive atmosphere of the Hear Grand Island concert series fills Railside with music of every genre during the summer.



### MILEAGE TO GRAND ISLAND

Chicago	599 mi
Dallas	636 mi
Denver	397 mi
Kansas City	287 mi
Minneapolis	446 mi
Omaha	145 mi
St. Louis	536 mi



### Stop-through, year-round

## Stuhr Museum

Every museum tells a story, but the 200 acre Stuhr Museum puts you in the story. This living history museum has been praised as the "best preserved pioneer town" (*True West*) and tells the story of people settling on the plains. It offers spectacular architecture, a recreated railroad town staffed by historic interpreters during the summer and holidays, Native American displays, and much more.

3133 W Highway 34, Grand Island  
308-385-5316 • [StuhrMuseum.org](http://StuhrMuseum.org)  
[info@StuhrMuseum.org](mailto:info@StuhrMuseum.org)

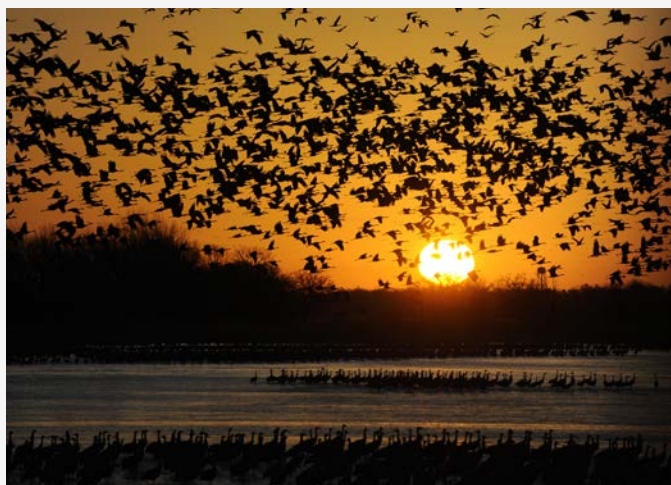


### End-destination, every March

## Sandhill Crane Migration

The world's largest crane roost, as documented by Crane Trust scientists, is just outside of Grand Island. It fills up every spring in the Central Platte River Valley when the central flyway hosts nearly 1,000,000 sandhill cranes in a roughly 90-mile span of the river. Jane Goodall visits almost every year, and National Geographic pegged it as the second greatest North American migration.

9325 S Alda Rd (Interstate 80 exit 305)  
308-382-1820 • [CraneTrust.org](http://CraneTrust.org)  
[info@CraneTrust.org](mailto:info@CraneTrust.org)





# Grand Island

## Nebraska

*Stop-through, year-round*

### Railside District

Grand Island's historic downtown, the Railside District, has experienced a renaissance over the past decade. Unique shopping, dining, and entertainment opportunities are all within a few block stroll when you're Railside. Highlights include a 1937 art deco movie theater, breweries, live outdoor music during the summer months, and Instagrammable murals.

201 W Third St, Grand Island  
308-398-7022 • [ArriveRailside.com](http://ArriveRailside.com)  
[director@ArriveRailside.com](mailto:director@ArriveRailside.com)



*Stop-through and end-destination, year-round*

### Fonner Park campus

Fonner Park plays host to many events throughout the year that are primed to be a part of your tour. Concerts at the Heartland Events Center and the Nebraska State Fair entertain every year. The 60+ year tradition continues in Grand Island when the gates open for live Thoroughbred horse racing every February through May at Fonner Park. Adding to the campus, a new casino resort is being planned for Fonner Park, scheduled to open in 2024.

700 E Stolley Park Rd, Grand Island  
308-382-4515 • [FonnerPark.com](http://FonnerPark.com)  
[dwilley@FonnerPark.com](mailto:dwilley@FonnerPark.com)



*End-destination, year-round*

### Midwest Ag Showplace

Grand Island, Nebraska is the showplace for agriculture in the midwest. Start at the 25,000 square foot Raising Nebraska, an interactive museum featuring how foods go from field to table. The 200-acre Stuhr Museum features historical agriculture, and the perennial Thoroughbred horse races at Fonner Park bring equine excitement to town every spring. A bevy of other ag-related businesses (CaseIH, AGI) and events (Husker Harvest Days, Nebraska State Fair, Rodeo Grand Island) round out the city's calendar and economy.

Call Grand Island Tourism at 308-382-4400.





# Hastings, Nebraska

EXPLORATION & ENJOYMENT at your fingertips!

Hastings is a city with small town charm. We are a friendly and thriving community where relationships, the arts, sports, and history merge with unique experiences and endless opportunities.



**Historic Downtown**  
Hastings is listed in the National Register of Historic Places. This is the heart of our city! You will find locally owned shops, restaurants & breweries to enjoy!

As a full service CVB, we are happy to assist you in any stage of your tour, from early planning, to event and hotel reservations. We will make your visit memorable.



Relax, have a picnic, feed the ducks, go fishing, and enjoy the atmosphere of our 20 beautiful parks throughout our city.



Hastings is the "Official Birthplace of Kool-Aid"! A yearly celebration - "Kool-Aid Days" - is held every August. Fun for all ages!



**Anjanette Bonham**

Executive Director, Adams County CVB  
219 N. Hastings Avenue  
(402) 461-2370  
[director@visithastingsnebraska.com](mailto:director@visithastingsnebraska.com)





# Group Tour Ideas and Attractions



## **Hastings Museum**

1330 N. Burlington Ave  
402-461-2399  
[hastingsmuseum.org](http://hastingsmuseum.org)

The Hastings Museum is the largest municipal museum between Chicago and Denver. Home to the 65-foot-wide super screen theater, the Kool-Aid exhibit, J.M. McDonald Planetarium, and the Adams County Historical Society.

## **Jackson Dinsdale Art Center Gallery**

700 E. 12th Street  
402-461-7396  
[hastings.edu](http://hastings.edu)



The JDAC is an architecturally innovative showplace for the arts and a superb teaching & learning environment for Hastings College students. The 1,100 square-foot main gallery is visible from the exterior through glass walls, acting as a beacon day and night to highlight the art showcased within. The gallery is open to the public at no cost.



## **Kool-Aid Factory**

518 W. 1st Street  
*The Official  
Birthplace of Kool-Aid*

The original factory where Edward Perkins invented Kool-Aid in 1927 is right in the heart of Downtown Hastings! It is not open for public viewing (all exhibits and memorabilia are on exhibit at the Hastings Museum). The Kool-Aid Factory is prominent attraction and a great photo op!

## **HASTINGS PROVIDES**

- 659 affordable hotel rooms
- Free hotel parking
- Variety of unique shopping opportunities
- Unique dining experiences

## **DIRECTIONS TO HASTINGS, NE**

- Hastings is located 18 miles south of Interstate 80
- Easy entrance from Highway 281, Highway 34, and Highway 6
- 2 hours/15 minutes from Omaha, NE,
- 1 hour/30 minutes from Lincoln, NE
- 6 hours from Denver, CO



## **Bigfoot Crossroads of America Museum & Research Center**

1205 E. 42nd Street  
402-705-0000

Believers or Non-Believers - this is a must see! This is the ONLY Bigfoot Museum in the state of Nebraska - and it's here in Hastings! The museum is located at the crossroads of Highway 281 and Interstate 80. The experience you will receive will be one-of-a-kind, focusing on historical, educational and scientific research. The museum was showcased as a featured stop in the 2020 Nebraska Passport Program generating lots of visitors!



## **WWII Naval Ammunition Depot**

East US Highway 6  
402-463-5838  
[adamshistory.org](http://adamshistory.org)

The Naval Ammunition Depot was established in 1942. It covered 49,000 acres, consisted of 2,200 buildings and employed 10,000 workers. It is located just southeast of Hastings. Group Tours are available upon request or can be self guided following a provided map of the property.



## **Prairie Loft Center for Outdoor & Agricultural Learning**

4705 DLD Road | 402-463-0565  
[prairieloft.org](http://prairieloft.org)

Just west of Hastings, Prairie Loft offers hands-on, active, place based learning activities for people of all ages! They offer programs, workshops, meeting spaces and community events.

## **SERVICES AND ASSISTANCE**

- Personal Welcome
- Step-On Guides
- Welcome Bags
- Customized Group Itineraries
- Entertainment Assistance
- Catering Assistance



For more Information, Lodging & Attractions go to: [www.visithastingsnebraska.com](http://www.visithastingsnebraska.com)



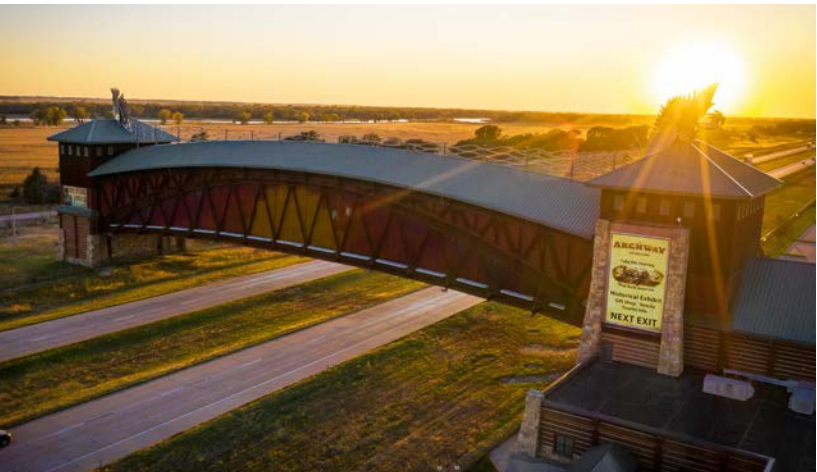
# KEARNEY

## NEBRASKA



### KEARNEY PROVIDES:

- 1,800 affordable hotel rooms
- Free hotel parking
- Motorcoach friendly restaurants within walking distance of hotels
- Variety of unique shopping opportunities



### COMPLIMENTARY SERVICES:

- Sample Itineraries
- Step-On Guides
- Personal Welcome
- Welcome Bags



### IT PAYS TO STAY!

Get \$100 when you stay overnight in Kearney!

\* Must have 15 or more paid rooms.



FOR INFORMATION CONTACT:

**ROGER JASNOCH, CTP**

[rjasnoch@visitkearney.org](mailto:rjasnoch@visitkearney.org) • 308-237-3161

Kearney, where the Heartland gathers.







### THE ARCHWAY - 1.5 - 2 HRS.

Walk with the pioneers over the Oregon Trail, watch a rider switch horses at a Pony Express Station and relive the building of the transcontinental railroad. All this history, and more, happened right here along the Platte River in Nebraska, and the Archway's family-friendly exhibit brings our rich history to life. Call for group rates or to set up a catered meal for your visit.

**877-511-2427 • archway.org**



### G.W. FRANK MUSEUM OF HISTORY - 1 HR.

Take a walk through Nebraska history! This beautiful, sandstone mansion was among the first electrified houses in the American West. It later became part of the Nebraska State Hospital for Tuberculosis. Exhibits and programs focus on the history and culture of central Nebraska. Located on the UNK campus.

**308-865-8284 • frank.unk.edu**



### MUSEUM OF NEBRASKA ART - 1 HR.

Experience Nebraska through the state's only collection of fine art produced solely by Nebraska artists depicting Nebraska. Also listed on the National Register of Historic Places.

**308-865-8559 • mona.unk.edu**

### FORT KEARNY STATE HISTORICAL PARK - 1 HR.

Built to protect Overland Trail travelers, Fort Kearny SHP near Kearney was a stage location, home station for the Pony Express, outfitting depot for Indian campaigns and home of the Pawnee Scouts. The stockade, parade grounds and blacksmith shop have been rebuilt. The Visitors Center is open Memorial Day weekend through Labor Day weekend, 9 am- 5 pm and during Sandhill Crane spring migration.

**308-865-5303**

**outdoornebraska.gov/fortkearny**



### TRAILS & RAILS MUSEUM - 1 HR.

The museum has six historic buildings, as well as a livery barn, a blacksmith shop and a Union Pacific steam engine and caboose. The Family History Center houses the extensive archive department. Join us for several special events through-out the year! Located on the original Mormon Trail route. Owned and operated by the Buffalo County Historical Society.

**308-234-3041 • bchs.us**



### NEBRASKA FIREFIGHTERS MUSEUM - 1 HR.

The museum is designed to safeguard and preserve Nebraska's proud firefighting heritage and to educate about fire prevention.

**308-338-3473**

**nebraskafirefightersmuseum.org**



### LINCOLN HIGHWAY SCENIC BYWAY

The Lincoln Highway was one of the earliest transcontinental highways for automobiles across the U.S. Situated along the Lincoln Highway, a.k.a. Highway 30, Kearney has many historical attractions and sites along the route, including a restored theater, Lincoln Highway mural and more.

**lincolnhighwaynebraskabyway.com**



### MORRIS PRESS - .5 HR.

One of the nation's largest cookbook publishers, is proud to invite you to visit their shop, "Leafie Mae's Kitchen." Browse through thousands of overrun cookbooks priced between \$2 and \$4 each.

**308-236-7888 3212 • East Hwy 30**



### PERFORMING ARTS

Whether your group enjoys the symphony, a musical, or the great acts of a play, Kearney has it all! We have numerous venues that host a variety of entertainment all year round. Call the Kearney Visitors Bureau or go to **visitkearney.org/events** for upcoming performances.



### SANDHILL CRANE MIGRATION

For six weeks, late February to early April, more than 80% of the world's population of Sandhill Cranes stop along the Platte to rest and refuel. They travel from southern wintering grounds to northern breeding grounds in Canada, Alaska and Siberia. Whooping Cranes, eagles, ducks, geese and shorebirds are among the other wildlife that migrate. For crane viewing information contact Ian Nicholson Audubon Center, Gibbon

**308-468-5282 • rowe.audubon.org**





# DISCOVER KEITH COUNTY

## *Nebraska's Western Oasis*

[ILoveLakeMac.com](http://ILoveLakeMac.com) | [ExploreKeithCounty.com](http://ExploreKeithCounty.com) | 308-284-4066

### **Join the millions of visitors who keep coming back to Keith County!**

You'll love the incredible year-round beauty of the Lake McConaughy State Recreation Area. Lake Mac is the largest lake in Nebraska and its second most-visited tourism attraction. With 75+ miles of white sand beaches and 55 square miles of water, it's perfect for camping, boating and fishing.

Our special brand of Western hospitality can be found wherever you go in Ogallala and Keith County, from our many bus-friendly hotels, restaurants and event venues to our historic sites and museums. Enjoy shopping for antiques, boutique clothing, souvenirs and gifts at our unique small businesses.







### Front Street Crystal Palace Revue & Museum

A tribute to Ogallala's history as the wild cow town at the end of the Texas Trail, the Crystal Palace Revue has been a local tradition since 1964. The musical comedy show with outdoor gunfight is staged in summer, and the steakhouse, saloon, replica Old West town and cowboy museum are open all year round.



### Petrified Wood & Art Gallery

Discover something new each time you visit this one-of-a-kind gallery. In addition to intricate petrified wood creations, it features Western and Native American art, gemstones, fossils, arrowheads and artifacts. The gift shop stocks art and jewelry by regional artists, plus souvenirs for rockhounds.



### Lake McConaughy Visitor/Water Interpretive Center

With a beautiful view of Lake McConaughy, the Visitor Center houses two 1,000 gallon aquariums as well as interactive exhibits and a 50-seat theatre. The lake area offers amazing birdwatching with over 360 species counted, including the Bald Eagles that congregate below Kingsley Dam in winter.



### Village of Paxton, Nebraska

Explore this charming community on the Lincoln Highway Historic Byway, including Anne Marie's, an antique shop housed in a restored train depot, and the Grainery coffee house, built into a 1920s grain elevator. The famous Ole's Big Game Steakhouse & Lounge features a vintage collection of 200+ trophy mounts.



### Keith County Historical Attractions

Built in 1887, Ogallala's lovely Mansion on the Hill is preserved and furnished in its original state. It is open to summer tours. The Mansion on the Hill campus also includes an authentic one-room schoolhouse and the O'Brien/Lute home, a homestead era cabin.

Historic Boot Hill cemetery where cowboys and pioneers were "buried with their boots on" is a few blocks west of the Mansion, and can be toured all year round.

The Little Church at Keystone near Lake McConaughy can be toured by appointment. Built in 1908 in a prairie town too small for two churches, it has a Catholic altar at one end and Protestant altar at the other.

## More To See & Do

### 2 Golf Courses:

Crandall Creek Golf Club, Ogallala  
Bayside Golf, Lake McConaughy

Prairie Theatre

Cornhusker Lanes Bowling

Tri-Trails Park

Kathleen Lute Public Library (Meeting Room)

Historic Haythorn Ranch (Tours 25+ Visitors)

Ash Hollow State Historical Park (Garden Co.)

Sounds on the Square Summer Concerts

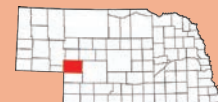
Kites & Castles at Lake Mac (July)

Ogallala Indian Summer Rendezvous (Sept.)

### Keith County Offers:

**600+ Hotel Rooms**

**30+ Restaurants**



See [ILoveLakeMac.com/Plan-Your-Visit/Groups](http://ILoveLakeMac.com/Plan-Your-Visit/Groups) for more group tour & event resources.

Presented by the Keith County Visitors Committee



A place to explore. A place to enjoy. A place to create memories.

# Discover LINCOLN



## Sample Itineraries



### Hub & Spoke

History abounds throughout Lincoln as the surrounding area offers history, Nebraska favorites and a variety of shops and restaurants to savor. Lincoln is a hub of activity all year round!



### Meet the Locals

Experience Lincoln through its great restaurants, scenic views and unique encounters—just like Lincolniters do! You are invited into places, off-the-beaten-path, where you will meet the locals.



### More than the Midwest: An Art & Culture Journey

From the prairie to the city, art in Lincoln is truly one-of-a-kind. See how the city comes to life in several different mediums.



### The Holidays in Lincoln

The hustle and bustle of the season isn't lost in Lincoln. Come enjoy the holiday spirit both indoors and out as Lincoln celebrates the most wonderful time of the year.



**285,000**

Population of Lincoln



**69**

Lodging Facilities



**5,000+**

Hotel Rooms

## Enjoy every season in Lincoln

### Spring

Cornhusker Classic Indoor Tractor Pull  
The Haymarket Farmers' Market  
Jazz in June

### Summer

Meadowlark Music Festival  
Lancaster County Super Fair  
Hub & Soul

### Fall

Lincoln Calling  
Market to Market Relay®  
Boo at the Zoo

### Winter

Lincoln Veterans Parade  
Lincoln Arts Festival  
Holidays in the Haymarket



## Why Lincoln?

- Welcoming Atmosphere
- Competitive Affordability
- Family Friendly
- Focus on Fun
- Easy to Navigate
- Engaging Attractions



Nebraska Hispanic Festival



Concert in the Park



Renaissance Festival



Pinnacle Bank Arena

## Resources for a Successful Tour

- Full Service Tour Planning
- Step-On Guides
- Customized Itineraries
- Group Tour Welcome
- Group Friendly Restaurants
- Group Friendly Attractions

\* [Ask about our booking incentives](#)

## Getting Here

### BY CAR



In the state of Nebraska, Interstate 80 runs west from Lincoln to the Wyoming state border, ultimately ending in San Francisco, California, and east ending in Teaneck, New Jersey, in the New York City Metropolitan area.

### BY AIR



DELTA AND UNITED SERVE LINCOLN

#### Lincoln Airport

402-458-2480  
lincolnairport.com

### BY TRAIN



Amtrak departs twice daily (westbound at 12:14 am; eastbound at 3:26 am) from the Lincoln Haymarket Station, located at 277 Pinnacle Drive. 800-USA-RAIL | amtrak.com

### BY BUS



**Arrow Stage Lines**  
arrowstagelines.com

**Windstar Lines**  
gowindstar.com

**Burlington Trailways**  
burlingtontrailways.com

**Dashabout Roadrunner**  
dashaboutshuttle.com



#### Mileage Chart

<b>Chicago</b>	520 mi
8 hours	
<b>Minneapolis</b>	430 mi
6.5 hours	
<b>Denver</b>	488 mi
7 hours	

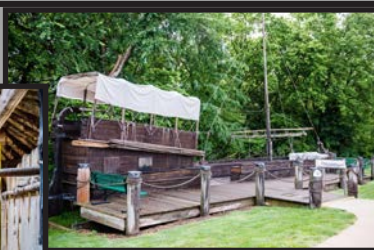
<b>Kansas City</b>	193 mi
3 hours	
<b>St. Louis</b>	442 mi
7 hours	
<b>Des Moines</b>	188 mi
3 hours	

Source: Google Maps

As a full service CVB, we are happy to assist you in any stage of your visit, from early planning, to event and hotel reservations. Please contact Kelsey Meyer at [kmeyer@lincoln.org](mailto:kmeyer@lincoln.org) or 402-436-2310 for more information.







MISSOURI RIVER BASIN

**Lewis & Clark**  
VISITOR CENTER

## *Walk in the footsteps!!!!*

Relive the adventure of the Lewis & Clark expedition by exploring our interactive exhibits: burrow with the Prairie Dogs, run with the American Bison, be surprised by our ferocious Grizzly Bear. Climb aboard our 55 foot long, authentic replica of the keelboat. Pull the oars on the pirogue and try your luck at navigating it up treacherous the Missouri River! Enjoy “We Proceeded On”, a 30-minute documentary on the expedition. Smell the fire in our 48 ft in diameter Plains Indian Earth Lodge. Follow trails to the Missouri River Overlook and Birding Amphitheater. Bring a snack lunch to eat at our several outdoor picnic areas. Here at the Lewis & Clark Visitor Center, your group tour is important to us. Your tour will include an introduction to the center upon your arrival sharing with you the things to see and do while you are inside and out. We also like to have another discussion after your tour in our Plains Indian Earth Lodge that allows time for interpretation and a time for Q&A.

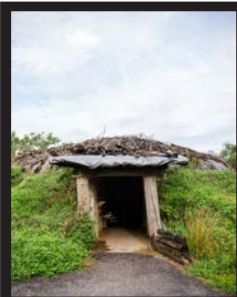


### **Missouri River Basin Lewis & Clark Interpretive Trails & Visitor Center**

100 Valmont Drive  
Nebraska City, NE 68410  
402-874-9900

[www.LewisandClarkVisitorCenter.org](http://www.LewisandClarkVisitorCenter.org)  
[Discover@LewisandClarkVisitorCenter.org](mailto:Discover@LewisandClarkVisitorCenter.org)





## Your Group Visit:

A suggested time frame for a visit is two to three hours. This would include one to two hours for the exhibits indoors and thirty minutes each for our movie and outdoor trails. We have picnic tables on our patio for lunches, weather permitting. We also have indoor space to set up tables and chairs in inclement weather. All food is to be brought in or catered. We do not offer food services onsite.

## Group Tour Policies:

For group tours, there is \$1 off per admission. This makes our admission rate the following:

Adults- \$6.00  
Seniors- \$5.00  
Students- \$4.00

We comp bus drivers and tour coordinators/teachers. We do not have a minimum group number and we accept cancellations via phone at any point before the tour.

## Parking Details:

We have a large and private parking lot that is free to park in and accommodates several buses at the same time.

## Itinerary Suggestions:

Please contact us for a proposed itinerary for your trip! We often work with many different types of groups to organize their visit to Nebraska City. We have strong relationships with other attractions in Nebraska City and surrounding areas that enable us to come up with a customized trip for your group.

## Contact Info for Group Tours:

Doug Friedli, Executive Director  
402-874-9900

[DougFriedli@gmail.com](mailto:DougFriedli@gmail.com)

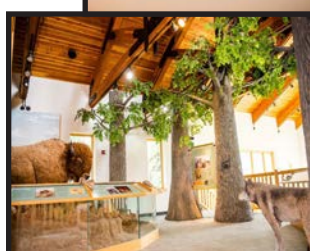
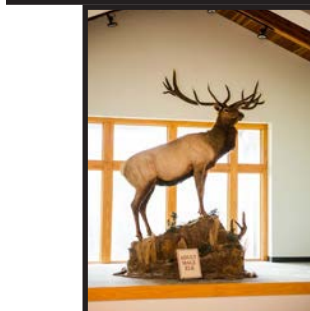


Location of Nebraska City in Nebraska.



Location of the center in Nebraska City

We are located 3 miles west of I-29 at Exit 11 for Nebraska City.  
We are also 1 hour from Omaha and Lincoln with I-80 going through both.





visit  
**NORFOLK**  
area  
NEBRASKA

EXPLORE &  
STAY AWHILE



*Boyhood home of*

*Johnny Carson*



402.371.2932



VisitNorfolkNE.com





## GROUP TOURS

Get to know **JOHNNY CARSON**

Call for Quote



# JOHNNY CARSON TOUR

CHECK OUT  
OTHER GROUP  
TOURS

VisitNorfolkNE.com  
402.371.2932

### Begin the day at the Elkhorn Valley Museum.

The featured exhibit includes the Johnny Carson Gallery where you can see the history of Norfolk's famous son. Items in the exhibit include his Emmy awards, Kennedy Center medallion and a replica stage where you can hear one of Mr. Carson's favorite monologues. Spend some time in the living room watching the best of Carson. Your visit isn't complete without checking out the square turn tractor, printing press and other historical memorabilia.

At the museum, enjoy a historical reenactment of Faye Gordon. Faye taught school in Norfolk and was a favorite teacher of Johnny Carson, who featured her on his show later in her life.

1  
HOUR

### Next stop is the Johnny Carson Mural.

This large series of paintings by artist Karl Reeder, shows the progression of Johnny's career. This is a great spot to take a picture!

15  
MINS

### Enjoy lunch at Black Cow Fat Pig.

Black Cow has a polished casual atmosphere, with an emphasis on locally-sourced food and a scratch kitchen. Everything is made in house, from its hand-cut fries to homemade desserts. Owners, Michael and Amber Behrens, source the ingredients locally and place an emphasis on supporting our local Farmers Market with our seasonally-inspired menus.

1.5  
HOURS

### Tour Johnny Carson's childhood home in Norfolk.

Owner, Jim McKenzie, will speak about the history of the house and items found along the way while bringing it back to its original condition. Baden Luna, will portray young Johnny. John has come home from 1939 to share what it was like to be a kid in Norfolk in the 30s. He may just have a trick or two up his sleeves.....

1.5  
HOURS

### Tour and taste at the Norfolk Arts Center.

This modern building has two gallery spaces that houses traveling exhibits, as well as a sculpture garden and several permanent pieces. The Norfolk Arts Center brings people and the Arts together. Enjoy a wine tasting event.

1  
HOUR

### Take in a show at the Great American Comedy Festival in June.

Honoring his legacy as one of America's greatest comedians ever, paying tribute to his status as a TV icon and remembering with gratitude the fondness Carson had for the community he called home. The Great American Comedy Festival was created in 2008 to pay tribute to the legacy of Norfolk's favorite son, Johnny Carson. **Special accommodations can be made for bus tours.**

### Sleepover at our place.

Book your rooms at one of Norfolk's plush hotels.

## PLANNING SERVICES & ASSISTANCE

- Welcome Bags
- Unique Dining
- Shopping
- Entertainment Assistance

For more information call Traci at 402.371.2932 or email [traci@visitnorfolkne.com](mailto:traci@visitnorfolkne.com)



# The perfect group tour DESTINATION.

**North Platte, Nebraska is here to help plan your next group tour adventure.**

Come and enjoy one-of-a-kind adventures awaiting your group in North Platte. Travel back in time to the 19th century and rediscover Buffalo Bill Cody's home during his Wild West Show. Climb aboard a horse-drawn wagon and enjoy the beautiful Nebraska scenery. Immerse yourself in the history of WWII at the Lincoln County Historical Museum. Experience the panoramic view of the world's largest rail-yard from 8-stories high — and much more!

We invite you to come and experience our unique and vibrant community that offers fun and excitement for all ages. The North Platte Visitors Bureau is ready...all we need is you!

- Ag Tours
- Entertainment Assistance
- Customized Group Itineraries
- Catering Arrangements
- 1,700 Sleeping Rooms
- Shopping
- Welcome Bags
- Daily State Park Permits Provided
- Mystery Tour Ideas
- Unique Dining Experiences



## Your guide to North Platte:



**Amanda Connick**  
Group Sales Specialist  
[aconnick@VisitNorthPlatte.com](mailto:aconnick@VisitNorthPlatte.com)  
101 Halligan Drive  
North Platte, NE 69101  
[VisitNorthPlatte.com](http://VisitNorthPlatte.com)  
308-532-4729





## Ride with the Wild Bunch Tour



2.5 hours

Buffalo Bill awaits your arrival to the mansion and barn he called home for 40 years during his Wild West Show. Experience the 'Wild West' as he lived each day; horses, wagon rides, and great food. The tour starts and ends at the Lincoln County History Museum and includes entertainment, food, and a tour of the museum before taking a wagon ride to Scouts Rest Ranch.

## Buffalo Bill State Historical Park



1 hour

North Platte is the home to the man who made the Wild West famous. Nobody personifies the frontier spirit better than William F. "Buffalo Bill" Cody, the west's most colorful showman. Visitors will get to know Buffalo Bill, the man and the legend, with a guided tour of his home and Scout's Rest Ranch show barn.

## WWII Canteen Experience



1 hour

The Lincoln County Historical Museum features displays from the famous North Platte WWII Canteen, where over 6 million soldiers stopped as their troop trains passed through. The tour includes a Canteen Style Meal and an informative presentation of the WWII Canteen from a local historian.

## Grain Bin Antique Town



1 hour

A one-of-a-kind antiquing destination! Grain Bin Antique Town has salvaged and re-purposed 20 historic wooden granaries. These historical grain bins have been filled with antique treasures of all kinds. This hidden gem is located in the beautiful hills south of North Platte, and we're confident that you'll enjoy the beauty that surrounds us as much as you purchases.

## Cody Park Railroad Museum



45 min

Step aboard Union Pacific's 3900 Series Challenger steam locomotive. You'll also see UP's #6922, the largest diesel locomotive ever made. Peek inside the historic Hershey Depot and climb aboard a mail car and caboose where you'll find historic railroad memorabilia.

## Golden Spike Tower and Visitor Center



1.5 hours

Rising 8-stories above the tracks, the Golden Spike Tower offers a panoramic view of Union Pacific's Bailey Yard from an open-air platform or enclosed viewing area. Over 10,000 rail cars pass through Bailey Yard each day, and you can see it all from atop the Golden Spike Tower and Visitor Center. Twilight tours now available.

## Working Farm Tour



2.5 hours

Tour this third generation farm that produces, corn, soybeans, wheat, and hay. This 1,000 acre farm is located just two miles south of North Platte. Your group will experience a little bit of farm life as you are escorted on a tractor-pulled wagon through the corn and hay fields as you learn about farming in Nebraska. What you will see will depend on the ebb and flow of farm life.

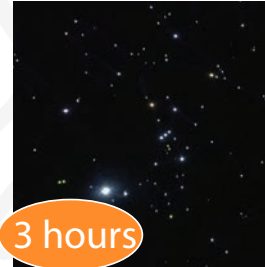
## Dusty Trails Outfitters



1-6 hrs

If you are looking for a fun and unique experience, Dusty Trails is the place to be. Dusty Trails offers kayaking, canoeing, horseback riding, a petting zoo, and tanking, which entails floating down the river in a 700-gallon cattle tank! Enjoy the beautiful Nebraska Scenery from afloat the North Platte River. Safe for all ages and abilities.

## Wine with the Stars



3 hours

This group event will give your tours the perfect way to wind down. Start the evening off with a wine tasting, winery tour, and light snacks. As the sun goes down, everyone can participate in an astronomer-led stargazing session featuring a powerful computerized telescope. The dark night sky of Western Nebraska will be on display for groups to have a truly memorable experience.

## Here's the Beef Tour



2-3 hrs

Here's the Beef Tour is an educational meal experience provided by the West Central Research office with the help of a local chef. It consists of a full meal with salad, sides, dessert and lemonade or iced tea to go along with 5 different cuts of beef. During which, the chef explains: the steps to raise and process the beef from pasture to table, different quality cuts, and grades of beef.



# *The* Old Market



**OMAHA'S ORIGINAL HISTORIC, ARTS & ENTERTAINMENT DISTRICT**

**1100 Howard Street - Omaha, NE 68102  
402-916-1796**

**OldMarket.com**





### General Information

Strolling through The Old Market district is a feast for the senses. Smells from over 40 restaurants, the sounds of street performers on the corners, the people-watching available at over 20 pubs and taverns, and the feel of the brick-laid roads under your feet – are why The Old Market is a destination to see.

Treat yourself with a spa treatment, take a horse-drawn carriage ride, or sip a drink on one of the numerous outdoor patios – The Old Market has you covered.

When you stay and shop in The Old Market, you are supporting local, independent, one-of-a-kind businesses. These establishments provide an experience you will not find anywhere else.



### Holidays in The Old Market - Thanksgiving to New Year's

Stroll the historic streets in the glow of thousands of twinkling lights, sponsored by Holiday Lights Festival, as you celebrate the season in Omaha's most impressive holiday display. The display will also be accented with LED snowflakes from the Omaha Downtown Improvement District, greenery, and bows. Discover a special wonderful holiday display lighting up the famous 11th & Howard intersection from all 4 corners.

1100 Howard Street • Omaha, NE 68102 • 402-916-1796 • OldMarket.com

## OMAHA'S ORIGINAL HISTORIC, ARTS & ENTERTAINMENT DISTRICT



### Large Group Accommodations

There are several Old Market restaurants that can accommodate large groups.

Spaghetti Works, at 11th & Howard, is the perfect restaurant for your next large party. With private party rooms available to seat up to 125 people, and a custom party menu that offers our wonderful food at a great cost, we can handle wedding rehearsals, birthday parties, business meetings and any other special occasion for your large party. Book your next event to be at Spaghetti Works today! 402-422-0770

Restaurants include Upstream Brewing Company, Jams American Grill, Stokes Bar & Grill, and many others.

### Bus Tour Parking

Buses may drop off, pick up and wait on the SW corner of 10th & Jackson for free. You can also reserve numerous parking spots through the COORD Driver app.

### Directions/Location in Omaha

Downtown Omaha just blocks south of Dodge Street – 10th to 14th Streets between Leavenworth and Farnam Streets.



*The* Old  
Market





# Ole's Big Game Steakhouse & Lounge



I-80 Exit 145 · Main Street, Paxton, Nebraska



Ole's Big Game Steakhouse and Lounge in downtown Paxton, Nebraska, just off Interstate 80, has been known for eight decades as a place where good friends gather. There are more than 200 big game trophies and countless momentos of Ole's worldwide safaris, making this a visit to history and adventure.



Group reservations contact Tim Holzfaster  
at [olesbiggame@gmail.com](mailto:olesbiggame@gmail.com) or call: 308.239.4719



EST. 1933

# Ole's BIG GAME STEAKHOUSE



Ole's would like to thank the tour industry for being a repeat customer. For years Ole's has been serving large groups and coaches as they travel across the plains.

We are proud to represent Nebraska hospitality at its finest.

## Restaurant Hours

### Main Dining Area

Open @ 10:00 AM

### Monday - Saturday

Serving until 10:00 PM

### Sunday

Serving until 9:00 PM

### Breakfast Served

Daily starting at 7:00 AM

**Welcome  
Groups!**

— [olesbiggame.com](http://olesbiggame.com) —

I-80 Exit 145 · Main Street, Paxton, Nebraska



# A QUICK GUIDE TO ALL THINGS OMAHA.

## Major Omaha Group Attractions

- **Boys Town** – Guided tours of this National Historic Landmark. Visit the Hall of History, Father Flanagan's restored 1920s home and the breathtaking Dowd Chapel.
- **Lauritzen Gardens** – Narrative tram tours wind through over 100 acres of outdoor gardens. Tours also include Kenefick Railroad Park, home to the largest and most powerful diesel-electric locomotives ever built.
- **Omaha's Henry Doorly Zoo & Aquarium** – Visit the world's largest indoor desert and the largest indoor rainforest in North America. Explore African Grasslands which spans 28 acres and includes a full immersion outdoor habitat teeming with African wildlife. Enjoy the new \$22 million Asian Highlands, an 8-acre journey through the grasslands of India to the Himalayan Mountains. Also experience a world-class aquarium, gorilla valley, orangutan forest, IMAX Theatre, and much more. Tram tours are available.
- **The Durham Museum** – Located in the historic Union Station. Offers a fascinating look at the history of the region through its permanent displays, and broad range of Smithsonian-affiliated traveling exhibits.
- **The Old Market** – Omaha's historic art, shopping and dining district. Cobblestone streets lined with unique shops, local restaurants and more. Horse drawn carriage rides available.
- **River City Star Riverboat Cruises** – A variety of interactive and themed cruises are tailor-made to fit any group. Complete with food, drink and entertainment.
- **Outlook Nebraska Inc. (Toilet Paper Factory Tour)** – Behind the scenes tour of a factory that makes toilet paper for the United States military. Majority of employees are blind.
- **Big Mama's Kitchen** – Featured on the Food Network. Groups experience authentic soul food dishes created by Big Mama and her family, complete with food presentations.

## Performing Arts in Omaha

- **Omaha Community Playhouse** – America's largest community theater provides some of the finest productions in the Midwest. Experience behind the scenes tours before the performances.
- **Omaha Symphony** – Enjoy an array of performances from timeless masterpieces to high-energy rock and roll, pop, and soaring movie music.
- **Omaha Performing Arts** – Responsible for bringing some of the world's finest artists to Omaha through a diverse presenting series featuring Broadway, classical, jazz, dance, and more.
- **Opera Omaha** – A professional opera company producing music events featuring nationally and internationally known artists.



Omaha's Old Market Entertainment District

**Contact: Jessica Settje**

jsettje@visitomaha.com (402) 444-1760

Just a few miles  
to make your trip  
**SHORT AND SWEET.**

**KANSAS CITY 184 MI**

**CHICAGO 469 MI**

*Visit*  
**OMAHA**  
VisitOmaha.com



**DENVER 540 MI**

**ST. LOUIS 436 MI**

**DALLAS 663 MI**

**DES MOINES 135 MI**

**MINNEAPOLIS 379 MI**

**INDIANAPOLIS 608 MI**

**WICHITA 307 MI**



Omaha's Henry Doorly Zoo & Aquarium



Toilet Paper Factory





German Dancers

## Ethnic Tours

Enjoy the sounds of an Irish folk singer guitarist, admire the colorful costumes of Mexican folk dancers, and learn the art of making Czechoslovakian kolaches. Sing along at your own German Oktoberfest celebration anytime of year, or try your hand (and feet) at Greek dancing. Taste mouth-watering Lithuanian tortes, sample a variety of Chinese teas, and learn about Scottish traditions in an authentic 35-room castle. Visit Germany, Ireland, Greece, Mexico, France, Scotland, Poland, Ukraine, Czech Republic, India, Sweden, China and Lithuania. The world awaits – no passport required.



Mormon Trail Center

## Historical Omaha Tours

History comes alive in Omaha. Swivel up to an old-fashioned soda fountain and enjoy a phosphate at The Durham Museum, Omaha's historic Art Deco train station. Visit the home of Civil War General George Crook and experience life as a frontier hero. Learn about the struggles and triumphs of the Mormon pioneers during their winter migration in 1846. Stroll around the Boys Town campus and feel the spiritual impact Father Edward Flanagan continues to make on the world. Discover hidden treasures in the historic riverboat community of Florence, nestled along the banks of the Missouri River.



Kenefick Park

## Train Tours

Hop aboard history in the city where President Abraham Lincoln started the transcontinental railroad. Home to one of the first Art Deco train stations in the country, groups can step back in time at The Durham Museum, even get on board President Harry S. Truman's press train. Two of the most powerful locomotives ever built greet tour groups at Lauritzen Gardens which also boasts a fascinating outdoor railroad garden. See thousands of artifacts at the Union Pacific Museum, including a dining, lounge and coach car, the railroad's extensive china collection, and authentic vintage uniforms, menus and furniture from the nation's first transcontinental railroad.



Warren Buffett

## Warren Buffett Tours

Tour groups will experience life as a billionaire and learn the fascinating story behind one of the richest men in the world, Warren Buffett. Visit his favorite restaurants, see where he works and learn how he went from selling Coca Cola for a nickel to owning one of the most powerful and respected conglomerates in the world. Tour Buffett-owned Nebraska Furniture Mart, one of the largest furniture stores in the world (and yes, they deliver), and shop at Borsheims, the largest independent jewelry store in the country.



Madrigal Christmas Feast

## Christmas around the World

Feast with kings and laugh with jesters at a Madrigal Feast like no other. Watch as model trains travel twiggy trestles through a botanical wonderland filled with thousands of poinsettias – some that grow 20 feet tall. Walk through a gingerbread village filled with more than 150 decorated houses. And let Scrooge be your guide on a fanciful theatrical journey. With more than a million twinkling lights decorating the city, Omaha is a place for groups to create magical memories during the holidays.



River City Star

## Irish Tours

Featuring professional Irish musicians, singers and dancers; Father Flanagan's Boys Town Tour; Irish whiskey tasting; an exquisite Irish Dinner on the River City Star; and more.



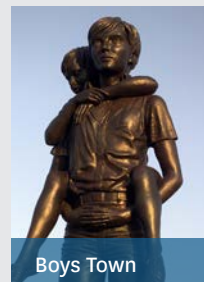
Mexican Folk Dancers



Poinsettia Tree



Durham Museum



Boys Town



## ART GALLERIES & MUSEUMS

### Bartels Rock & Mineral Museum

Link Library at Concordia University, 800 N. Columbia Ave, Seward. Open during library hours: Mon.-Fri., 8-5 pm, Sat. 10-5 pm, Sunday 1-6 pm. 402.643.3566



**Marxhausen Gallery**, Concordia University, 800 N. Columbia Ave. Open Monday-Friday, 11am-4pm, Saturday and Sunday 1-4pm while classes in session. 402.643.3651



**Red Path Gallery & Tasting Room** • 514 Seward St, Seward, Stop in for a glass of wine and a viewing of some remarkable Nebraska Artwork in Downtown Seward! 402.540.6929 • redpathgallery.com

**Langworthy Gallery - Civic Center**, 616 Bradford St, Seward, Open Monday-Friday 8am-5pm 402-643-4470 [www.sewardciviccenter.org](http://www.sewardciviccenter.org)

**Seward County Historical Society Museum**, Goehner Rich in county heritage, the museum features a one-room schoolhouse, a restored 1908 home, antique farm equipment, vintage autos, dishes, doilies, dolls and more. The Chippewa Northwestern Railway Co., a one-inch scale live steam railroad runs on the six-acre grounds from May to October on the 2nd & 4th Sundays. Free train rides. Open Thursdays 10am-4pm, Sundays 1:30pm-5pm. 402.523.4055 (for appt) [www.sewardcountymuseum.org](http://www.sewardcountymuseum.org)



**Nebraska National Guard Museum**, Tells the story of the history and heritage of the Nebraska National Guard since its founding on December 23, 1854. View the "Cornrow to Hedgerow 4D Experience" that honors Nebraska's citizen soldiers in World War II. Free and open to the public. Mon.-Fri., 8am-4pm and Saturday (tourist season - select hours). Call 402-309-8763 or check out on Facebook: Nebraska National Guard Museum or online at [nengm.org](http://nengm.org).



### Inner Maker Art Village

Giant Labyrinth on grounds. [www.innermaker.com](http://www.innermaker.com), 402-540-6929



- \* Exceptional Lodging - Historic Goehner Home
- \* A Unique Shopping Experience - Vintage & New
- \* Tall Grass Prairie Tours/Little Brown Box Road Trips

## RECREATION

### Seward's Unique Round Pool

Our unique round pool offers water features, zero level entry and a lap pool. Contact 402.643.4674 or visit [cityofsewardne.com](http://cityofsewardne.com) for hours.



### Seward's Hiking, Biking & Nature Trail

The Plum Creek Trail is a 2.7 mile concrete hiking and biking trail that winds through the east side of Seward. It starts near the

Seward Sports Complex on Karol Kay Boulevard and ends on the south side of Seward on South Columbia.

### The Plum Creek Sports Complex

has soccer, baseball, and softball fields, batting cages, play-ground units, an outdoor basketball court, sand volleyball court and 18 hole disc golf course. For area sports schedules call City Parks & Rec at 402.643.3511 or visit SHS and CU websites at [www.sewardpublicschools.org](http://www.sewardpublicschools.org) and [www.cune.edu](http://www.cune.edu).



## TASTING ROOMS AND BREWERIES

**Junto Wine**, 1356 182nd Rd Situated between Lincoln and Seward, the rolling Garland hills provide an opportunity to craft unique wines and offer stunning views. Thurs. 12-7pm, Fri-Sat 12-9pm, Sun. 12-6pm. Available by Appt. 402.646.0515 [juntowine.com](http://juntowine.com)



### Red Path Gallery & Tasting Room

514 Seward St, Seward 402.540.6929 [redpathgallery.com](http://redpathgallery.com)



### Bottle Rocket Brewing

230 5th St. • 402.304.5673 [bottlerocketbrewing.com](http://bottlerocketbrewing.com)

Seward County Visitors Bureau - [sewardnebraskatourism.com](http://sewardnebraskatourism.com)

Seward County Chamber & Development Partnership

616 Bradford St. • Seward, Nebraska 68434  
402.643.4189



# SEWARD COUNTY NEBRASKA "HOT SHEET"

## PROMOTING PLACES TO SEE AND THINGS TO DO

### OTHER PLACES OF INTEREST

#### World's Largest Time Capsule - Hillcrest Ave.



Took three weeks and over 60 cubic yards of cement to build and houses a 1976 Chevy Vega, a motorcycle and hundreds of other items. Opening in 2025.

**The Seward Cross Makers** - A group of men and women who give of their time to create hand crafted wooden crosses. Contact them for a tour at [thecrossmakers@yahoo.com](mailto:thecrossmakers@yahoo.com).



**Goehner Centennial Players Melodramas/ Olde Glory Theatre** Melodramas are held each June at the Olde Glory Theatre in Seward. Other plays and concerts take place throughout the year. [OldeGlorySewardNE.com](http://OldeGlorySewardNE.com)

**Rivoli Theatre** - a beautiful, renovated, historic theatre. Two theaters featuring Art Deco and beautiful pastel murals. [www.rivoliseward.com](http://www.rivoliseward.com)



**Children's Memorial Park - Corner of Hillcrest & Columbia.** A place to honor and remember children who have been lost from our world too soon. Three brick walls, containing the etched children's names and messages along with two unique art pieces bring messages of hope and peace to those who visit the memorial.

### EDUCATION



Concordia University  
800 N. Columbia, Seward  
[www.cune.edu](http://www.cune.edu)



Southeast Community College  
Milford Campus , 600 S. State St., Milford  
[www.southeast.edu/MilfordCampus](http://www.southeast.edu/MilfordCampus)



St. Gregory the Great Seminary  
800 Fletcher Road, Seward  
[www.stgregoryseminary.edu](http://www.stgregoryseminary.edu)

**Goehner Spaghetti Feed - March**  
**Bee Spring Chicken Dinner - April**  
**Utica Heritage Days - July**  
**Milford Fun Days - July**

**Cordova Pigeon Races - July**  
**Milford Family Fun Days - August**  
**Staplehurst VFD Street Dance - August**  
**Beaver Crossing Beaver Daze & Rib Fest - August**

**Plum Creek Children's Literacy Festival - September**  
**Goehner Museum Care Show - October**  
**GFWC Seward Jr. Women's Craft Show - November**  
**Bee Annual Barn Dance - December**

### CELEBRATIONS & EVENTS

**Seward Municipal Band** concerts held at the outdoor band shell on 140 N. 5th each Sunday at 7:30 pm from Memorial Day weekend to the first or second week in August.



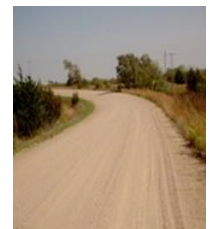
**Seward's 4th of July Nebraska and the United States' official small town 4th of July!** Celebrated since 1868, visitors will experience a full day of family activities, entertainment, craft fairs, contests and a grand parade. For more information, go to [julyfourthseward.com](http://julyfourthseward.com). Festival held every year on July 4th! [JulyFourthSeward.com](http://JulyFourthSeward.com)

**Seward County Fair** - Held in August, the fair showcases 4-H and FFA projects, open class entries and local and regional entertainment. The food court and fair restaurants provide a wide variety of tasteful entrées for every palate. [www.sewardcountyfair.com](http://www.sewardcountyfair.com)

**Christmas Festival** - Celebrate the start of the Christmas season in Seward the Saturday after Thanksgiving. See Santa arrive on the fire truck in the morning with fun activities around the square. Enjoy the afternoon on a horse and wagon ride and the evening at the Evening Lighted Christmas Parade! Christmas at Concordia the first weekend of December.



**Ride the Ridge Road** - Thousands of years ago, great glaciers carved out beautiful hills and valleys, leaving sprinklings of rocks and minerals and a home for magnificent groves of oaks. This area just northeast of Garland is locally known as the Bohemian Alps, a place of quiet and natural beauty.



#### Holiday "Magical Lights"

Nebraska's Largest Christmas Light Show. Black Friday - New Years Eve at the Seward Fair Grounds/Centennial Park.





## WALK IN HER FOOTSTEPS

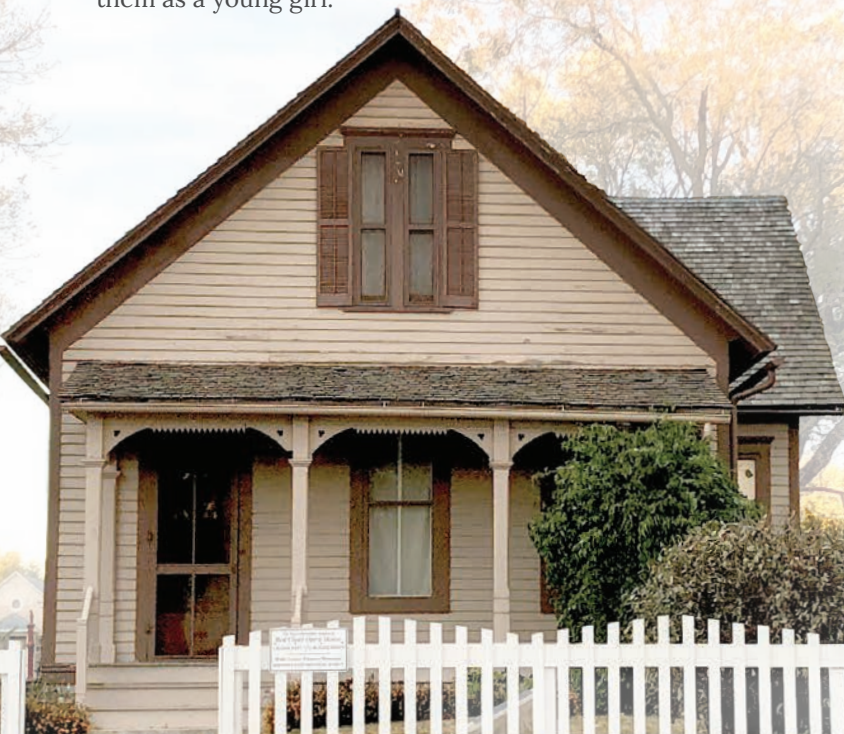
Discover the World of Will Cather, Nebraska's foremost citizen.  
Author of *O Pioneers!*, *My Ántonia* & *One of Ours*.

### Experience Will Cather's Red Cloud

- Explore our exhibit, *American Bittersweet: The Life & Writing of Will Cather*
- Tour the extensive Collections & Archives at the National Will Cather Center
- Visit Will Cather's childhood home and other sites related to her life and writing
- Take in a performance at the Red Cloud Opera House
- Enjoy a delicious lunch served in our beautiful art gallery
- Hike, picnic, star-gaze dark skies, or watch the sunrise and sunset at the Will Cather Memorial Prairie
- Explore scenic country roads or take a Cather "Country Tour" of outlying properties and settings
- Shop the National Will Cather Center bookstore and gift shop

The National Will Cather Center preserves, operates, and interprets the largest assembled group of nationally-designated historic buildings related to any author in the United States.

To visit Red Cloud is to encounter a town and entire landscapes that are largely unchanged and as world-famous author Will Cather knew them as a young girl.



PLAN YOUR TRIP AT  
**WillCather.org**  
or call 866-731-7304

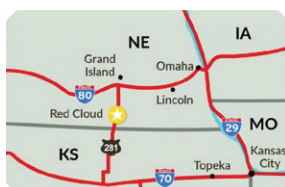


## WELCOME BUS TOURS!

You will enjoy an immersive and historic experience and let us create the perfect itinerary— and meal—for your timeframe:

- Free meal and tours for drivers/escorts
- Discount on group lodging
- Complimentary bus parking
- On-site tour coordinator

### LOCATION



Red Cloud is in south-central Nebraska on the Kansas border just over an hour between I-70 & I-80 on U.S. 281 and 20 miles north of the Geographic Center of the USA!

### ON-SITE DINING

Catered meals, boxed lunches, and even picnics on our pristine prairie are available upon request!

### HISTORIC SITES



Guided tour options of our historic sites each include the Willa Cather Childhood Home. There are also tour combinations that include a variety of sites.

### STAY A NIGHT-OR TWO!

Red Cloud offers historic lodging for small groups of 15 or less. Plans for a 26 room boutique hotel are underway (open 2023). Options for larger groups are available in nearby Hastings.

### PRAIRIE



Our 612-acre tract of untouched prairie is preserved as Willa Cather would have known it. Hike through the great rolling ocean of grass and witness the flora and fauna in the changing seasons.

## BOOK YOUR TOUR!

To book your Red Cloud experience, contact Rachel Olsen, EDUCATION COORDINATOR  
rolsen@willacather.org or 1.866.731.7304 (office)

Find us on social media!  
@WillacatherFdn



Great Stories  
Grow Here  
*Red Cloud*

Learn more about Red Cloud:  
Red Cloud Tourism & Commerce  
Jarrod McCartney, DIRECTOR  
jmccartney@redcloudnebraska.com  
(402) 746-4065 • www.visitredcloud.com

Find us on social media!  
@visitredcloud



### GROUP TOURS & PRICING

#### Childhood Home + 1 site

Two historic Red Cloud sites: Willa Cather's home (a National Historic Landmark), plus one

#### The Founder's Tour

Tour Childhood Home and visit our NWCC Collections & Archives

#### Tours are \$10 per person

[ \$25 includes a boxed lunch ]  
Inquire about other themed tours.



### HOURS OF OPERATION

**March 1 to October 31:**  
Tuesday - Saturday  
9:00 a.m. to 5:00 p.m.

**November 1 to February 28:**  
Tuesday - Friday  
9:00 a.m. to 5:00 p.m.

Saturday  
10:00 a.m. to 2:00 p.m.

Closed on New Year's Day, Easter, Fourth of July, Thanksgiving, Christmas Eve, and Christmas Day.

Group tours will be accommodated after hours and on off days if booked in advance.



# York, Nebraska welcomes your group tour to Experience York County

*a Celebration of*

# 150

## YORK COUNTY 1870

Remembering The Past | Embracing The Future



AND THE COMMUNITIES OF:

**BENEDICT • BRADSHAW  
GRESHAM • HENDERSON  
LUSHTON  
McCOOL JUNCTION  
THAYER • WACO • YORK**

FOR ATTRACTIONS AND ACTIVITIES CONTACT:



York County Visitors Bureau • 601 N. Lincoln Ave. • York, NE 68467

OR VISIT US AT:

Phone: 1-888-SEE-YORK (1-888-733-9675) or 402-362-4575

Web: [www.yorkvisitors.org](http://www.yorkvisitors.org)

## CELEBRATING 150 YEARS IN 2020

Find the Balloon, and you'll find York, Nebraska at the intersection of Interstate 80 and Highway 81. History abounds in our area since we started as a mere dot on the map for thousands of pioneers migrating westward along the various trails, especially the Nebraska City-Fort Kearney Cut-off. The original road ranches have been replaced with our much fancier and updated hotels. Travel back in time to 3,000 B.C. at the Clayton Museum of Ancient History, the turn-of-the-century Mennonite settlement at Henderson, and the working 1920's-era farm at Wessels Living History Farm. Lost your marbles? Find them at one of the world's largest privately-owned collection of playing marbles. Attend live theater at the Yorkshire Playhouse in downtown York, delighting audiences for over 47 years. Play golf at one of our lush area courses. We welcome you to come... be our guest and EXPERIENCE YORK COUNTY!



York, the county seat of York County, is conveniently located at the intersection of Highway 81 and Interstate 80, just a 50 minute drive from the state capital - Lincoln.

# ORK



# Group Tour Ideas and Attractions



## Wessels Living History Farm

takes you back to the 1920's. This unique attraction features a wonderful farm house, barn, granary, church, school, and more all dated for that specific decade in Nebraska's history. Visitors will be able to experience firsthand

what it was like for benefactor Dave Wessels to grow up on a midwestern farm during that time period ... as was his wish for children of all ages. Group tours are encouraged to make a stop. Call 402-710-0682 for more information.



## Chances "R" Restaurant and Hobnob Lounge



**Chances "R" Restaurant and Lounge** has been dishing up great food and offering great customer service for the past 60 years with the Reetz Family ownership. They enjoy a national reputation, receiving numerous awards over the years. Pan-fried chicken, prime rib, homemade mashed potatoes and gravy, and carrot cake are their specialties. Soups, salads and dressings are also homemade. Their Sunday Brunch is something everyone should experience at least once in their lifetime! The "R" hosts more motor coach tours than any other restaurant in Nebraska, including Lincoln and Omaha. 402-362-7755 is the number to call.



**Henderson, Nebraska** is a wonderful Mennonite community that embraces their Dutch-Russian history as they trace the 1874 journey of 35 Mennonite families immigrating from Holland to Russia and then to the United States. A large home that housed all 35 families was constructed, called the Immigrant House, a replica of which may be seen at the Henderson Mennonite Heritage Park, along with a church, general store, and store. Henderson was one of the first places in the Midwest to utilize deep-well irrigation and construction of central pivot irrigation systems. Displays of these are also available for viewing. For information please call 402-723-5694.



**Clayton Museum of Ancient History** is located on the York College Campus. It is a world-class collection belonging to Foster Stanbeck. The gallery hall shows the history of ancient Mesopotamia, also known as the land between two rivers. This area of the world has been ruled by empires for millennium ... Sumerians, Egyptians, Assyrians, Babylonians, Persians, and many more. Follow the timeline to familiarize yourself with the events of the people who called Mesopotamia home from 3,000 B.C. to 500 B.C., and the events they witnessed. See many objects from those early centuries including a rare "sad eyebrows" helmet, coliseum tokens, clay tablets, parts of sandals with hob nails, and a reproduction siege machine (onager) used by the Roman army in 300 A.D. Free-will offering. More information on tours is available by calling 402-363-5600.

## Lee's Legendary Marble Museum



**Lee's Legendary Marble Museum** is home to the country's largest privately-owned collection of vintage handmade and machine-made playing marbles. It may very well be the world's largest collection as well. There are well over a million marbles in Lee's collection, valued at well over \$1,000,000. Vintage marble games and toys are also on display. Admission is free-will offering. More information is available by call 402-362-3320.

## SERVICES AND ASSISTANCE

- Welcome and Visitor Bags
- 645 Sleeping Rooms
- Industrial and Ag Tour Suggestions
- 40 Dining Options ranging from fine dining at a nationally-recognized restaurant, to fast food
- Unique Shopping Opportunities
- Step-on Guides
- Entertainment Suggestions
- Catering Suggestions

## FOR ATTRACTIONS AND ACTIVITIES CONTACT:



York County Visitors Bureau • 601 N. Lincoln Ave. • York, NE 68467

OR VISIT US AT:

Phone: 1-888-SEE-YORK (1-888-733-9675) or 402-362-4575

Web: [www.yorkvisitors.org](http://www.yorkvisitors.org)



## Greetings from Nebraska!

It's been a while! We can't wait to welcome you back for new and exciting tours. COVID-19 had an immediate and devastating effect on the tourism industry worldwide, and Nebraska was no exception. But the tourism industry is resilient, and we are ready to host your groups with unparalleled hospitality.

Groups who have explored our state return home with stories of world-class museums, interactive experiences, and breathtaking landscapes—from the rolling hills along the Missouri River to the immense grass-covered dunes of central Nebraska's Sandhills and the buttes in the west. All of it is ready for your tours.

Nebraska's urban area, Omaha and Lincoln, offer a cosmopolitan atmosphere where groups can explore charming historic districts, wander through public art spectacles and dine at incredible restaurants serving meals prepared fresh with local ingredients and beef. However, if bright lights and big cities aren't your group's "thing," you're still in luck!

The areas outside of the metro and capital city offer their own gems, including the internationally known sandhill crane migration, where each spring, 80 percent of the world's sandhill crane population roosts on the Platte River in central Nebraska. Follow in the footsteps of early pioneers who trekked westward for a new life along the Mormon and Oregon Trails, and walk along wagon ruts still visible today around iconic landmarks like Chimney Rock.

If your groups are looking for something more adventurous, float the river in a livestock watering tank, take a Jeep eco-safari tour, or hike the longest rails-to-trails conversion in the country.

Getting away from it all and truly relaxing is a normal way of life in Nebraska. So let us help you plan your next exciting and fun-filled group adventure in the Cornhusker State. Up-to-date tour information and resources are located on Nebraska Tourism's group tour website at [visitnebraska.com/group-travel](https://visitnebraska.com/group-travel). We can't wait to share our state with groups!

  
John Ricks, Director  
Nebraska Tourism Commission







## DID YOU KNOW?

1. The name "Nebraska" came from the Native American word meaning "flat water" after the Platte River.
2. Omaha is home to Warren Buffet, who's net worth is currently more than \$103B.
3. Ole's Big Game Steakhouse & Lounge, in Paxton, NE, boasts a 1,300-pound polar bear.
4. Scotts Bluff National Monument near Gering rises 800 feet above the floor of the Platte River Valley; the Native American moniker for the Bluff, Ma-a-pa-te, means "hill that is hard to go around".
5. The world's largest ball of stamps can be found at the Leon Myers Stamp Center at Boys' Town, in Omaha, NE.
6. North Platte, NE, is home to the world's largest railroad classification yard, Bailey Yard.
7. The Willa Cather Center is home to one of the most recognized American writers – who achieved recognition for her novels of frontier life on the Great Plains.
8. Kearney, NE, is located in the geographic center of the U.S. – between Boston and San Francisco, each way is exactly 1733 miles on either side of Hwy 30.

## Start planning!



## Contact

Micheal Collins, CTIS

Visit Nebraska

Micheal.Collins@nebraska.gov

402-471-3795

**Find group travel itineraries at:**  
[visitnebraska.com/group\\_travel](https://visitnebraska.com/group_travel)



**VisitNebraska.com**